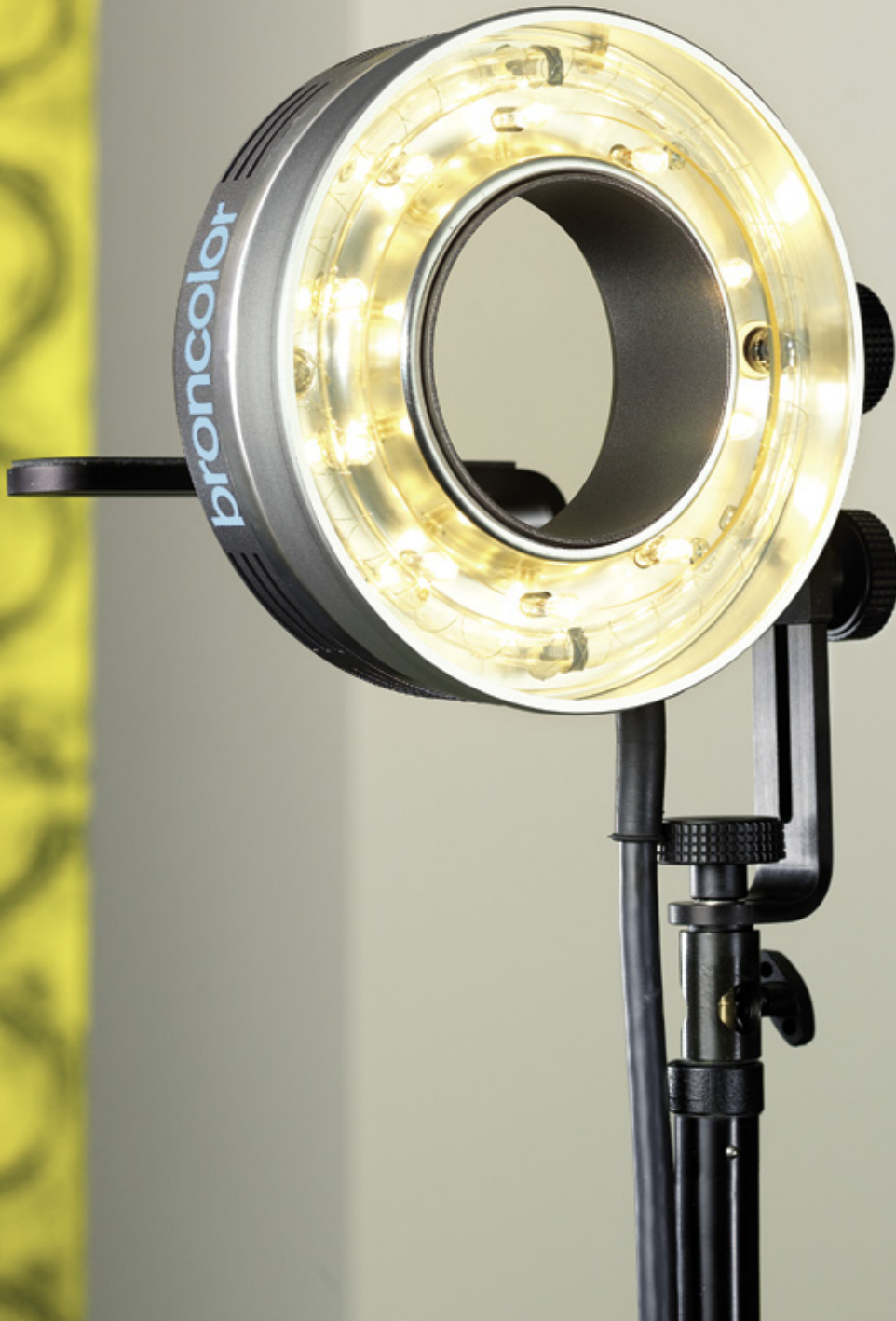


Ringflash

Experimenting with
and without shadow



Ringflash C and P

Experimenting with and without shadow

For many years, the incomparable light of the Ringflash has been a valuable asset in many domains of photography. Now, broncolor has redefined it! Our new Ringflash opens the door to creative options never seen before! Now, it is equipped with modelling lights and can be used with honeycomb grids or a soft reflector. The Ringflash P version can be combined with the Para FB.



RINGFLASH C

as included in the delivery

LIGHT IN THE DARK

The new Ringflash units – C for use on the camera and P for use in the Para FB – feature bright modelling lights. Ten small, rugged halogen lamps, each with 20 watts, are circularly arranged and deliver 200 watts of light that precisely simulates the properties of the flash.

For the first time, you no longer need to rely on a preview (or instant prints) to see the characteristic of the light; reflections and shadows can be orchestrated more deliberately and spontaneously.

The continuous light of up to 200 watts also narrows the pupils and thus largely eliminates the red-eye effect. Moreover, the light intensity is easily sufficient for autofocus cameras to reliably focus without additional light.



THE DEBUTS

Three new patent-pending honeycomb grids* (ø 198 mm / 107 mm x 22 mm) now shape the typical Ringflash light with gradations. The light is exciting and atmospheric. Depending on the honeycomb size, the shadows become correspondingly darker. The asymmetric adjustment options of the Ringflash make it possible to pan it in the optical axis up to a defined angle.

*pending patent





LIGHT AND SHADOW

Previously, the light of a Ringflash offered few options: it produced a mostly uniform – at best slightly centre-biased – fill. With the new patent-pending honeycomb grid set* (narrow, medium, wide), the lighting angle is now adjustable. From uniform to slightly or heavily centre-biased to spot-like, the full range of fills can be generated – always retaining the typical,

endearing characteristic of the Ringflash.

Additionally, the angle of the Ringflash can be adjusted independently from the camera angle. The hotspot is no longer confined to the centre but can be directed to the area where accentuation is desired.

COOL LIGHT

Thanks to the heavy-duty quartz flash tube and the powerful cooling fan, Ringflash C and P units can also be used for long flash sequences at high output ratings. Should the service temperature nevertheless rise above safe levels, the built-in thermal circuit breaker prevents overheating of the lamp.

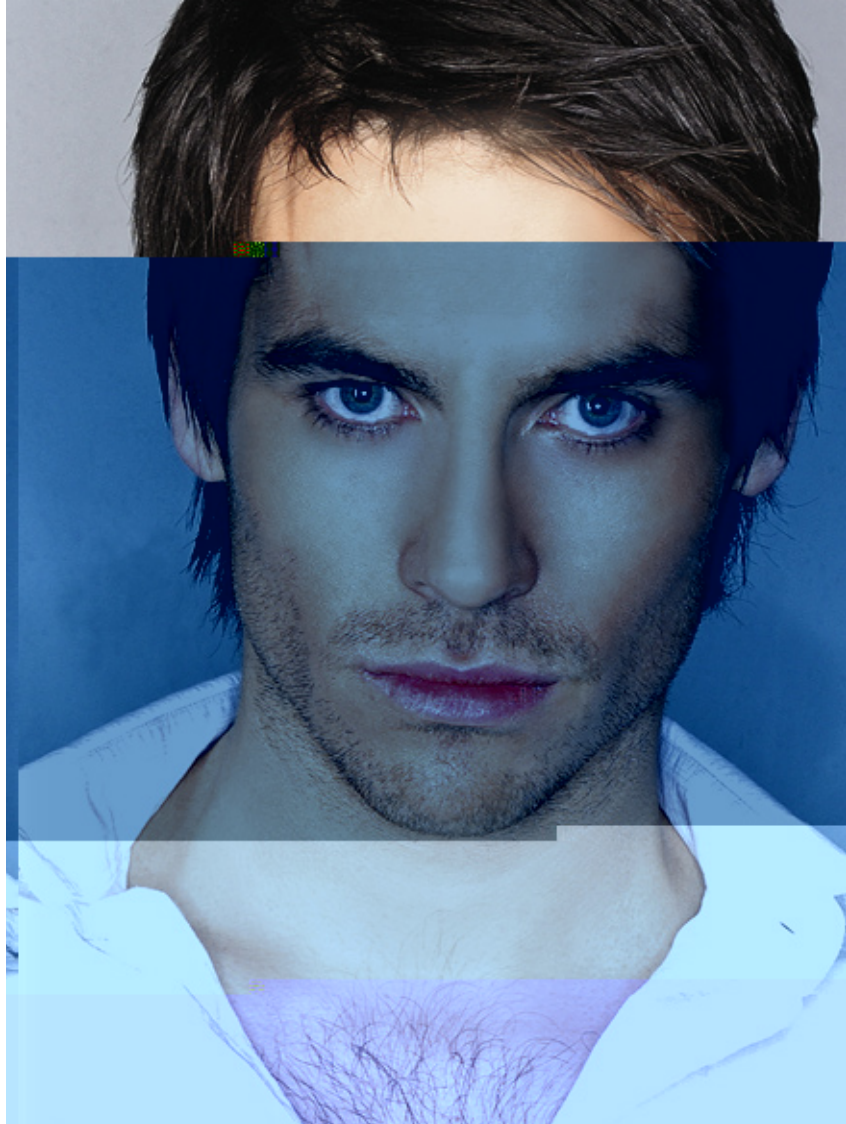
*pending patent



“I work with the Ringflash to create unique visual effects that cannot be achieved with any other light. Whether in the studio or on location, the technique I have developed with the Ringflash is responsible for the brisk demand of my fashion photos in a competitive market.” (Keeley Stone).

“The Ringflash endows my commercial work with an enhanced dimension. Detailed visual effects such as shapes, structures, and shadows increase the creative quality of my photography and impress my clients’ specialists.” (Alan Stone)

Alan & Keeley Stone by Stonesimaging UK
(www.commercialfoto.com)



RINGFLASH C

with honeycomb grid narrow

with honeycomb grid medium

without honeycomb grid



RINGFLASH C

- halogen modelling light 200 W
- a honeycomb grid set (3 pcs) is available for the Ringflash C
- heavy-duty UVE-coated flash tube (3200 J)
- powerful cooling fan
- suitable for all areas of flash light photography, especially fashion, still, food and macro

- can be connected worldwide to all mains supplies
- The UV portion of the flashlight is reduced to a minimum by the integrated filter


SOFT LIGHT

If the Ringflash light turns out to be too hard, the standard reflector can be replaced with a soft reflector. This increases the lighting area, which makes the light softer. A more generous light distribution reduces or even eliminates undesirable reflections (e.g. on greasy skin). And because the distance between the light and the shooting axis is increased, the red-eye effect is reduced as well. Another plus of the soft reflector is the high light output at 2 m with 3200 J f:45 6/10.

PRIMARY OR FILL LIGHT

The Ringflash C generates a hard light as primary light which causes a very special and typical shadow outline. Depending on the distance between the Ringflash and the model or object, these outlines are fuller and wider (short distance) or brighter and narrower (greater distance).

The Ringflash C serves not only as an excellent primary light but also as a perfect fill light. Always coming from near the camera (even when the camera is moving), its light reaches even the most remote angle of the set. Yet the light always remains compact and therefore hard, which wonderfully highlights structures even in the shadow areas.

 || URS RECHER, CH



RINGFLASH C
SOFT REFLECTOR
for soft light



RINGFLASH P IN PARA FB

In addition to its unique properties as a primary and fill light, a retrofit kit makes it possible to quickly and easily convert the Ringflash C to a Ringflash P which can then be used in Paras FB 170, FB 220 and FB 330 where it aligns the light source (contrary to the Pulso G lamp) exactly on the optical axis. In this way, the Para FB is filled with absolute uniformity and the reflections in the umbrella are moderately boosted, thus making them softer.

Of course, the angle of the Ringflash P is also adjustable in the Para FB so that a slightly asymmetric fill can be obtained. If you wish to convert a Ringflash P to a Ringflash C, this can be easily accomplished with another special retrofit kit.



RINGFLASH P

- halogen modelling light 200 W
- heavy-duty UVE-coated flash tube (3200 J)
- powerful cooling fan
- suitable for all areas of flash light photography, especially for people and on location
- can be connected worldwide to all mains supplies
- in combination with Para FB, very exact front focusing, which allows various light angles and light characteristics.
- the UV portion of the flashlight is reduced to a minimum by the integrated filter

broncolor System

POWER PACKS



Graft A2 / RFS
31.166.XX / 31.169.XX
Graft A4 / RFS
31.176.XX / 31.179.XX



Verso A4 / RFS
31.032.XX / 31.033.XX
Verso A2 / RFS
31.030.XX / 31.031.XX
Power Dock
for Verso A2 / A4 / RFS
36.124.00



Topas A2 / RFS
31.168.XX / 31.173.XX
Topas A4 / RFS
31.178.XX / 31.174.XX
Topas A8 Evolution / RFS
31.184.XX / 31.183.XX

LAMPS



Pulso G
32.115.XX 1600 J
Pulso G
32.116.XX 3200 J
Unilite
32.113.XX 1600 J
Unilite
32.114.XX 3200 J
Pulso Twin
32.117.XX
Pulso 8
32.118.XX
Picolite
small lamp
32.021.XX
Mobilite 2
small lamp
32.012.00

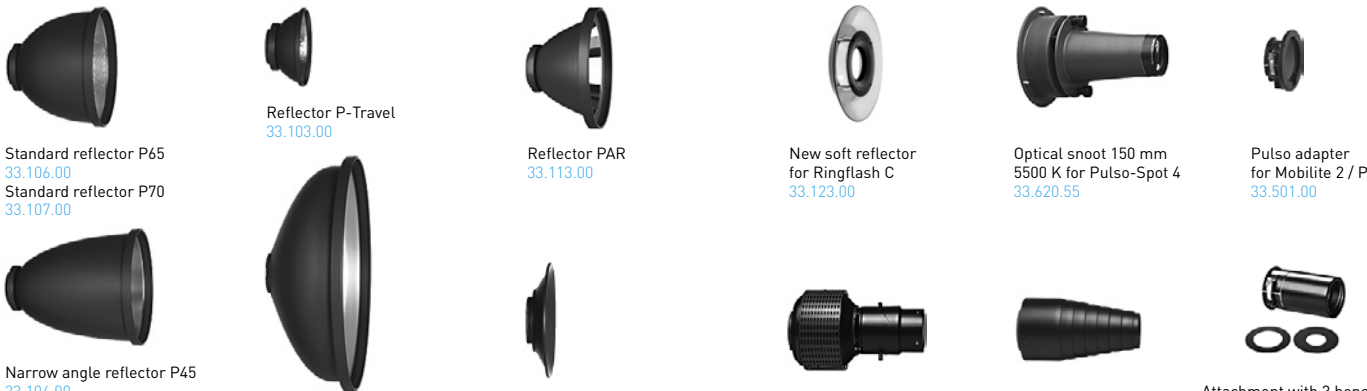
Reflectors are not included

EFFECT LAMPS



Ringflash C
32.462.XX
Ringflash P
32.461.XX
Litestick
32.451.00
Balloon
33.161.00

REFLECTORS AND ATTACHMENTS



Standard reflector P65
33.106.00
Standard reflector P70
33.107.00
Narrow angle reflector P45
33.104.00
Narrow angle reflector P50
33.105.00
Reflector P-Travel
33.103.00
Softlight reflector P
33.110.00
Reflector PAR
33.113.00
Wide angle reflector P120
33.112.00
New soft reflector
for Ringflash C
33.123.00
Spot attachment
33.640.00
Optical snoot 150 mm
5500 K for Pulso-Spot 4
33.620.55
Conical snoot
33.120.00
Pulso adapter
for Mobilite 2 / P
33.501.00
Attachment with 3 honey
2 aperture masks for Mo
33.204.00

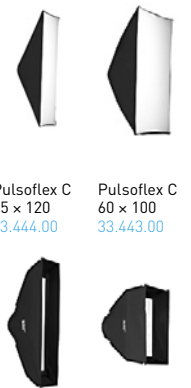
SPECIAL REFLECTORS



Satellite Staro
33.151.00
Satellite Evolution
33.150.00
Mini-Satellite
33.152.00
Para 170 FB
33.484.00
Para 220 FB
33.485.00
Para 330 FB
33.486.00

Stands are not included

SOFTBOXES



Pulsoflex C
35 x 120
33.444.00
Pulsoflex C
60 x 100
33.443.00
Pulsoflex EM
30 x 110
33.424.00
Pulsoflex EM
35 x 60
33.415.00

Technical Data

Ringflash C / Ringflash P



	Ringflash C	Ringflash P
Flash energy	max. 3200 J	max. 3200 J
f-stop at 2 m (6.6 ft) distance 100 ISO	45 1/10 (3200 J)	
f-stop at 2 m (6.6 ft) distance 100 ISO, with soft reflector	45 6/10 (3200 J)	
Modelling light	with power pack 200-240 V: 200 W halogen: 10 x 20 W/24 V with power pack 100-120 V: 200 W halogen: 10 x 20 W/12 V	with power pack 200-240 V: 200 W halogen: 10 x 20 W/24 V with power pack 100-120 V: 200 W halogen: 10 x 20 W/12 V
Cable length	5 m (9.8 ft)	5 m (9.8 ft)
Cooling	stabilised with 2 fans	stabilised with 2 fans
Dimensions without holder	∅ 200 / ∅ 101 x 80 mm / ∅ 7.9 / ∅ 4 x 3.2"	∅ 194 / ∅ 101 x 80 mm / ∅ 7.6 / ∅ 4 x 3.2"
Dimensions with holder	231 x 286 x 180 mm (W x H x D) / 10 x 11.3 x 7.1"	231 x 194 x 140 mm (W x H x D) / 10 x 7.63 x 5.5"
Weight with cable	2.7 kg / 6 lbs	2.2 kg / 4.9 lbs
Holder	Stand mount with 3/8" thread respectively 1/2" thread (when used with the enclosed adapter nut)	for Para 170 FB / 220 FB / 330 FB

	Accessories Ringflash C			Accessories Ringflash P
Optional accessories	Conversion kit for Ringflash C for conversion to Ringflash P	Honeycomb set for Ringflash C Set of 3 pcs.	Soft reflector for Ringflash C	Conversion kit for Ringflash P for conversion to Ringflash C
Article no.	36.125.00	33.219.00	33.123.00	36.126.00
Adapter Ringflash C for lamp stand 35.219.00				

f-stop for Ringflash P with Para 170 FB / 220 FB / 330 FB

Measured value for 3200 J, 100 ISO	Distance	focused	medium setting	defocused
Ringflash P with Para 170 FB	f-stop at 2 m (6.6ft) distance	128 2/10	90 6/10	90 1/10
	f-stop at 4 m (13.1ft) distance	90 4/10	45 4/10	32 7/10
	f-stop at 10 m (32.8 ft) distance	45 4/10	22 9/10	22 4/10
Ringflash P with Para 220 FB	f-stop at 2 m (6.6ft) distance	128 2/10	90 6/10	90
	f-stop at 4 m (13.1ft) distance	64 9/10	45 3/10	32
	f-stop at 10 m (32.8 ft) distance	32 7/10	16 9/10	11 4/10
Ringflash P with Para 330 FB	f-stop at 2 m (6.6ft) distance	90 7/10	64 8/10	45 9/10
	f-stop at 4 m (13.1ft) distance	64 6/10	32 9/10	32 7/10
	f-stop at 10 m (32.8 ft) distance	32 8/10	22 4/10	16 2/10

Subject to change in the interest of product enhancement.



broncolor
THE LIGHT

Bron Elektronik AG
CH-4123 Allschwil / Switzerland
www.broncolor.com